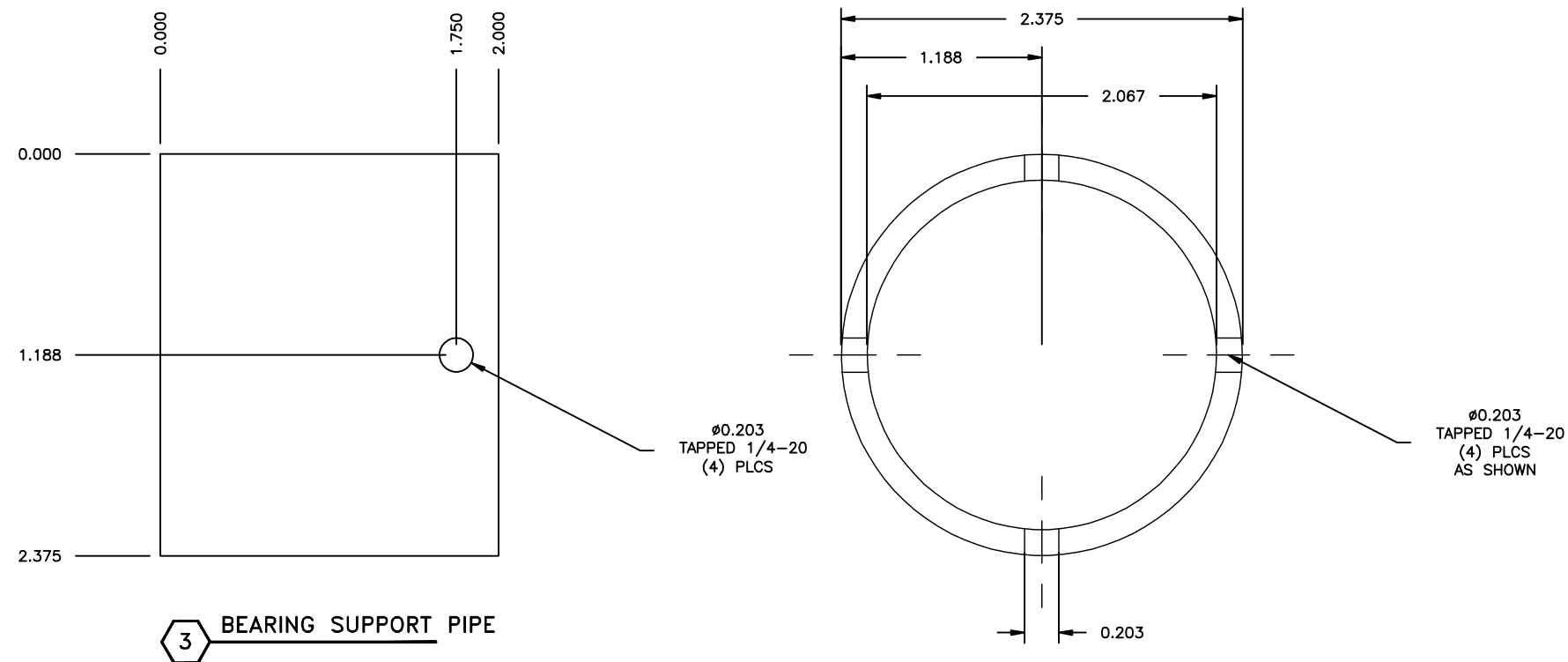
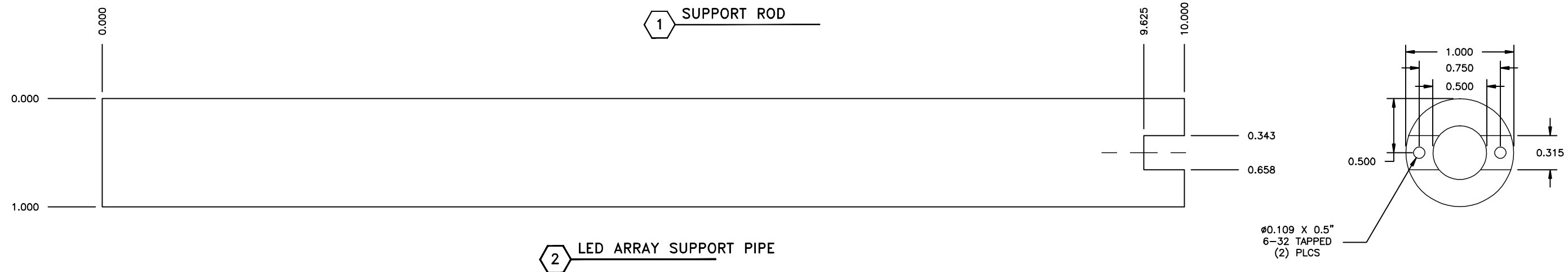
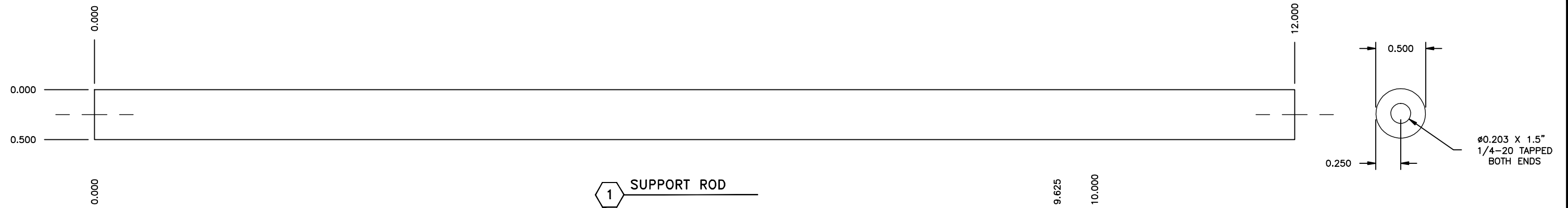


MATERIAL LIST			QTY FOR ONE	TOTAL QTY
ITEM	KEMCO PART #	DESCRIPTION		
1	AM2440	ROD, 1/2", ALUMINUM, CUT TO 12.0"	1	4
2	AM3040	TUBE, AL. 6061T6, 1" O.D., .5" I.D., CUT TO 10"	1	1
3	BFJ	PIPE, ALUMINUM, 2.0", SCH. 40, CUT TO 2"	1	1



UNLESS OTHERWISE NOTED:

- 1) ALL DIMENSIONS ARE IN INCHES.
- 2) REMOVE ALL BURRS AND SHARP EDGES.
- 3) PRIME ALL PARTS WITH RUST PROHIBITIVE EPOXY.
- 4) INTERIOR FINISH TO BE - SATIN BLACK. EXTERIOR FINISH TO BE - SATIN BLACK.
- 5) BORDER IS B-SIZE "11X17", ANY OTHER SIZE PRINT IS NOT TO SCALE.

Tolerance unless otherwise specified	KEMCO Industries, LLC. 70 Keyes Court Sanford, FL 32773		
	FRACT 1/32	Scale: 1" = 1"	Approved by:
.x	Plot Scale: 1:1	Drawn by: ARB	Date: 09-20-12
.xx ±.03	CHASSIS - POV DISPLAY - SHOP DETAILS		
.xxx ±.030	UNIVERSITY OF CENTRAL FLORIDA		
ANGLES ±1.0°	SENIOR DESIGN GROUP 8 - FALL 2012		
SURFACES N/A	KEMCO INDUSTRIES, LLC		Drawing No.: 12R007-EM2