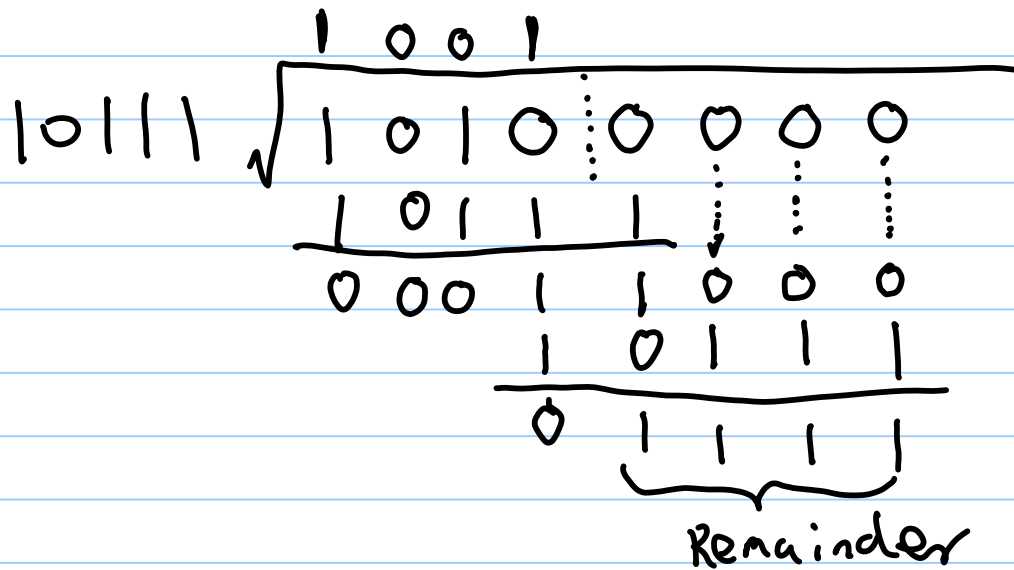


Data: 1010 Divisor: 10111

What is the codeword?



code word: 10101111

0x 9234 , 0x ABCD checksum

0x 9234 → binary: 1001, 0010, 0011, 0100

+) 0x ABCD → binary: +) 1010, 1011, 1100, 1101

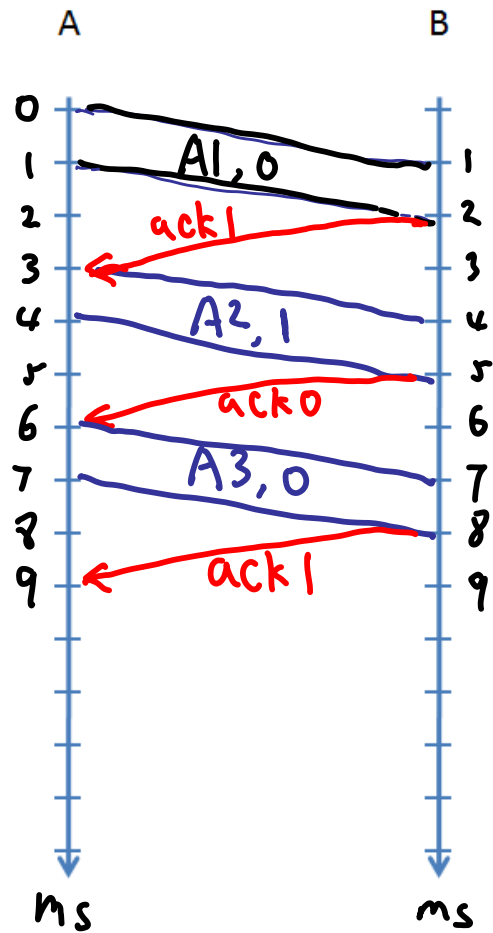
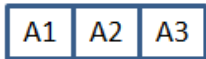
1001111100000001

+)
0011111000000010

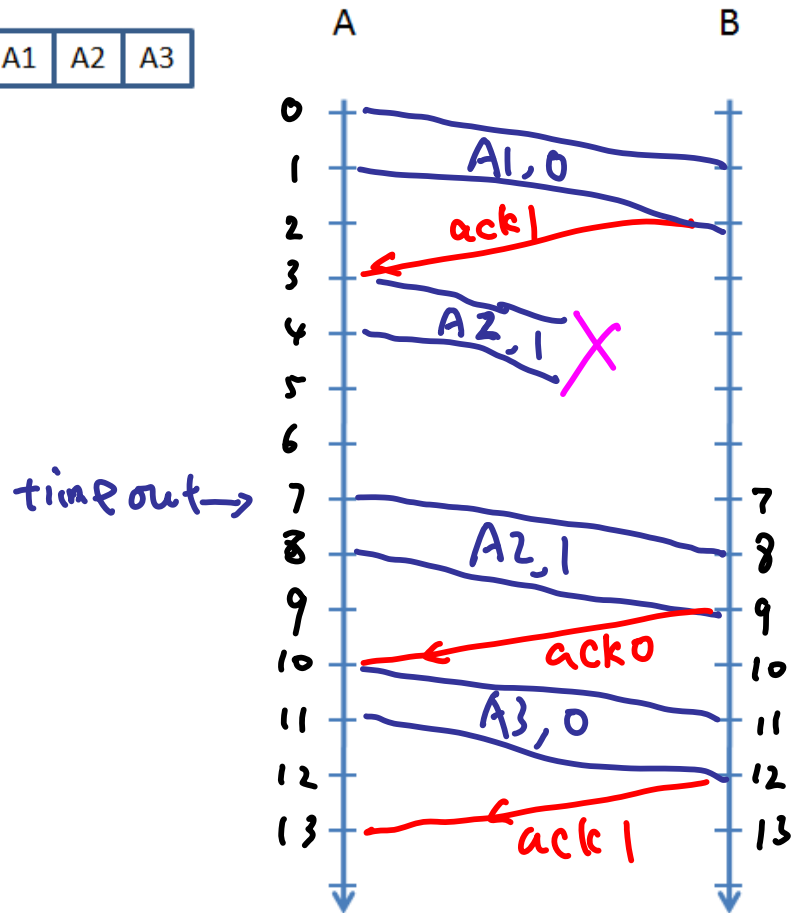
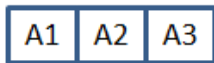
checksum 100,0001,1111,1101

0xC1FD

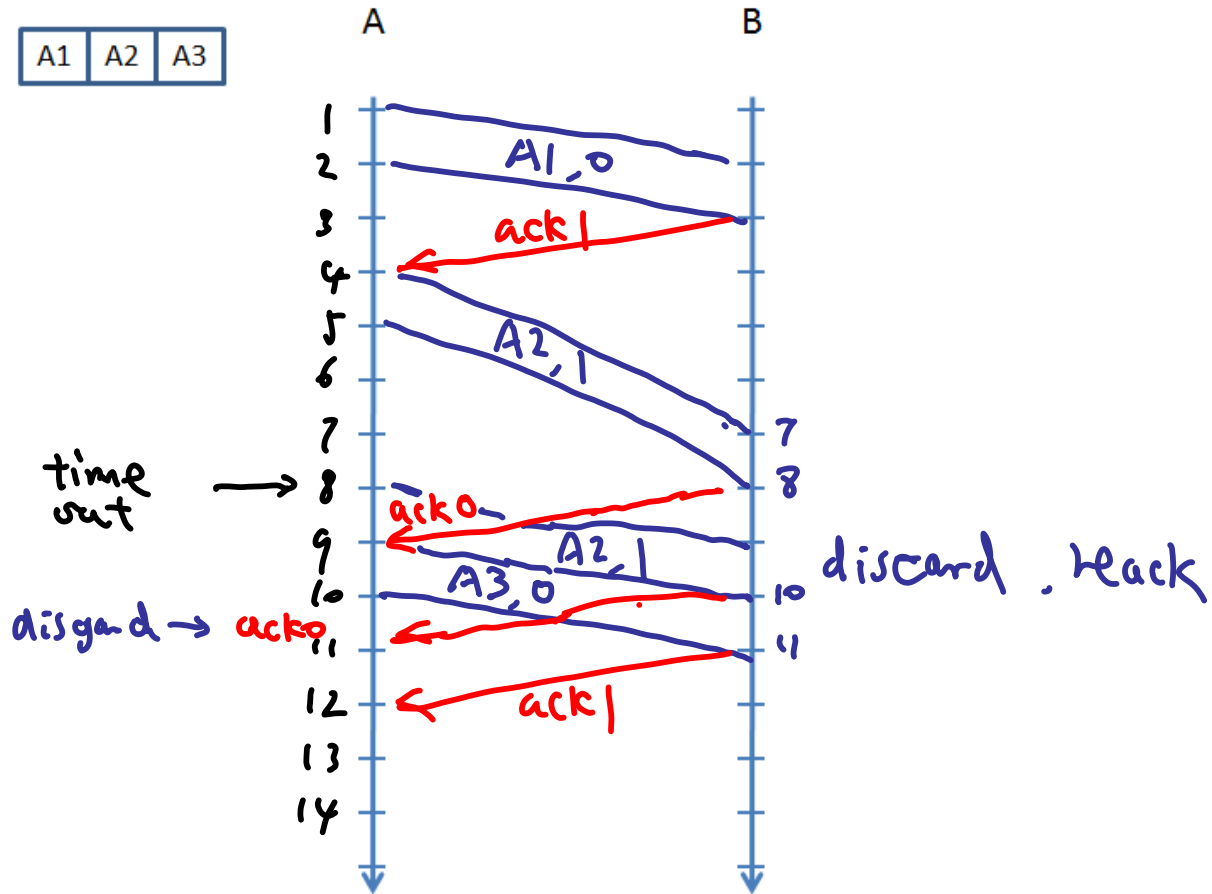
Case 1: Ideal channel without any error/lost or congestion



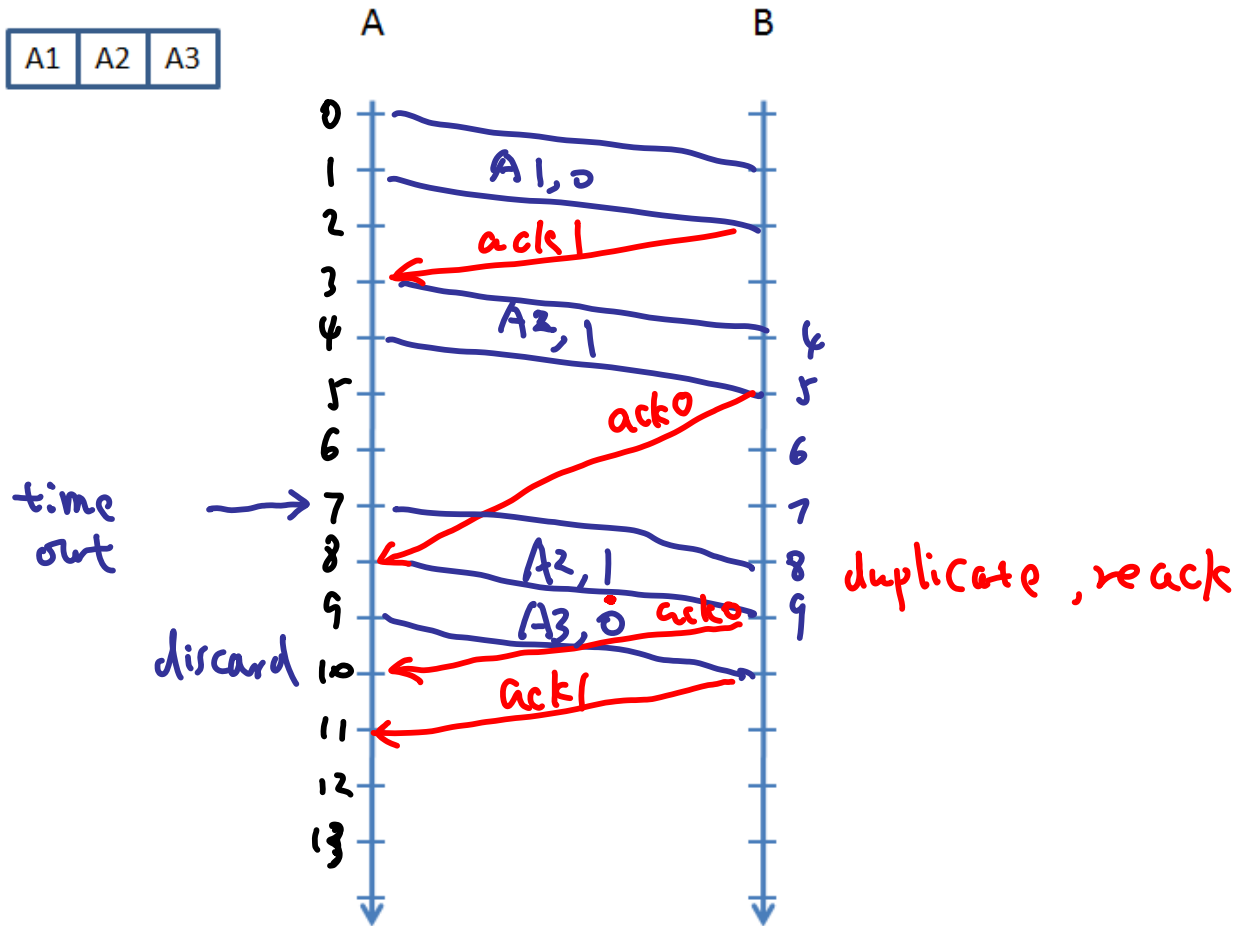
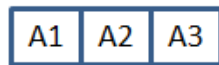
Case 2: second frame (A2) from A to B is lost



Case 3: second frame (A2) from A to B uses 3 ms

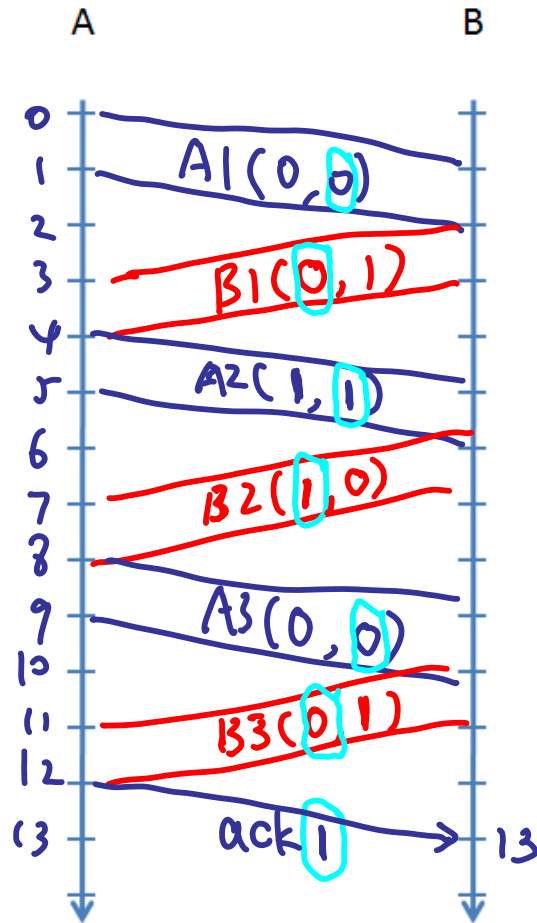


Case 4: second ack frame from B to A uses 3ms



Ideal channel without any error/lost or congestion

A1	A2	A3
----	----	----



B1	B2	B3
----	----	----

A ← B
use 0